



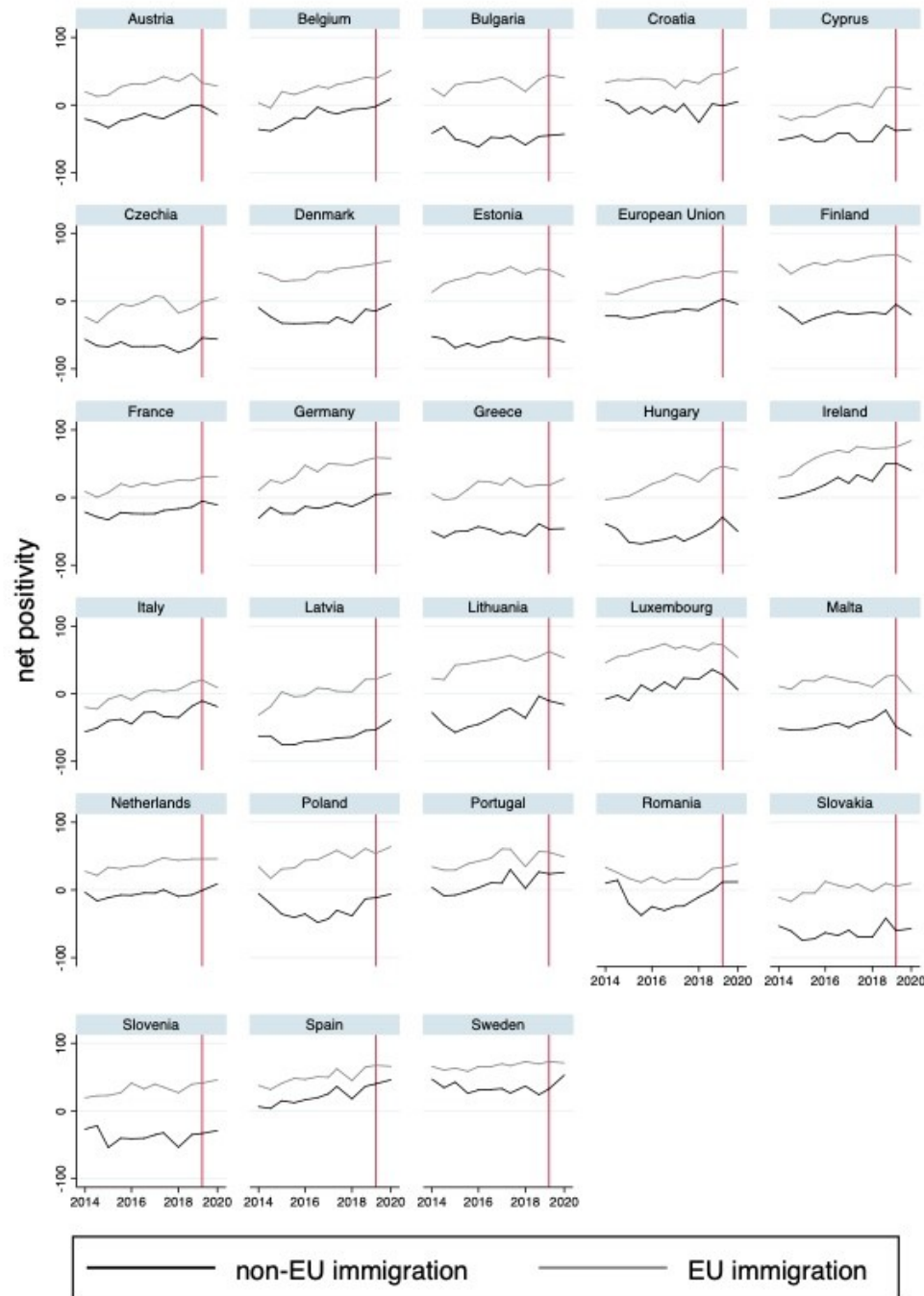
# COMMUNICATING ON MIGRATION: DESCRIPTION, EXPLANATION, INTERVENTION

E-Mindful Kick-off seminar

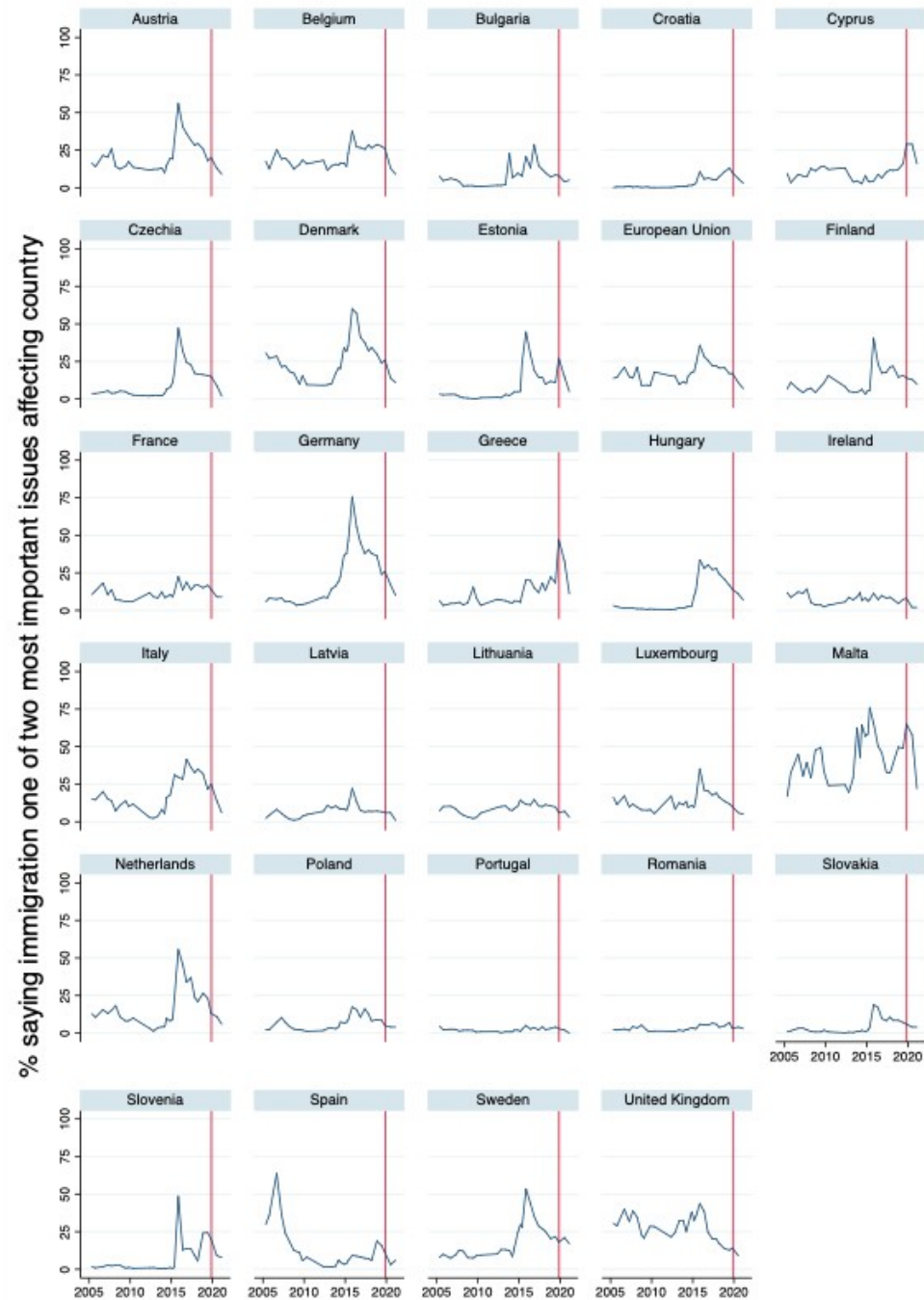
12 June 2021

Dr. James Dennison [james.dennison@eui.eu](mailto:james.dennison@eui.eu) @JamesRDennison

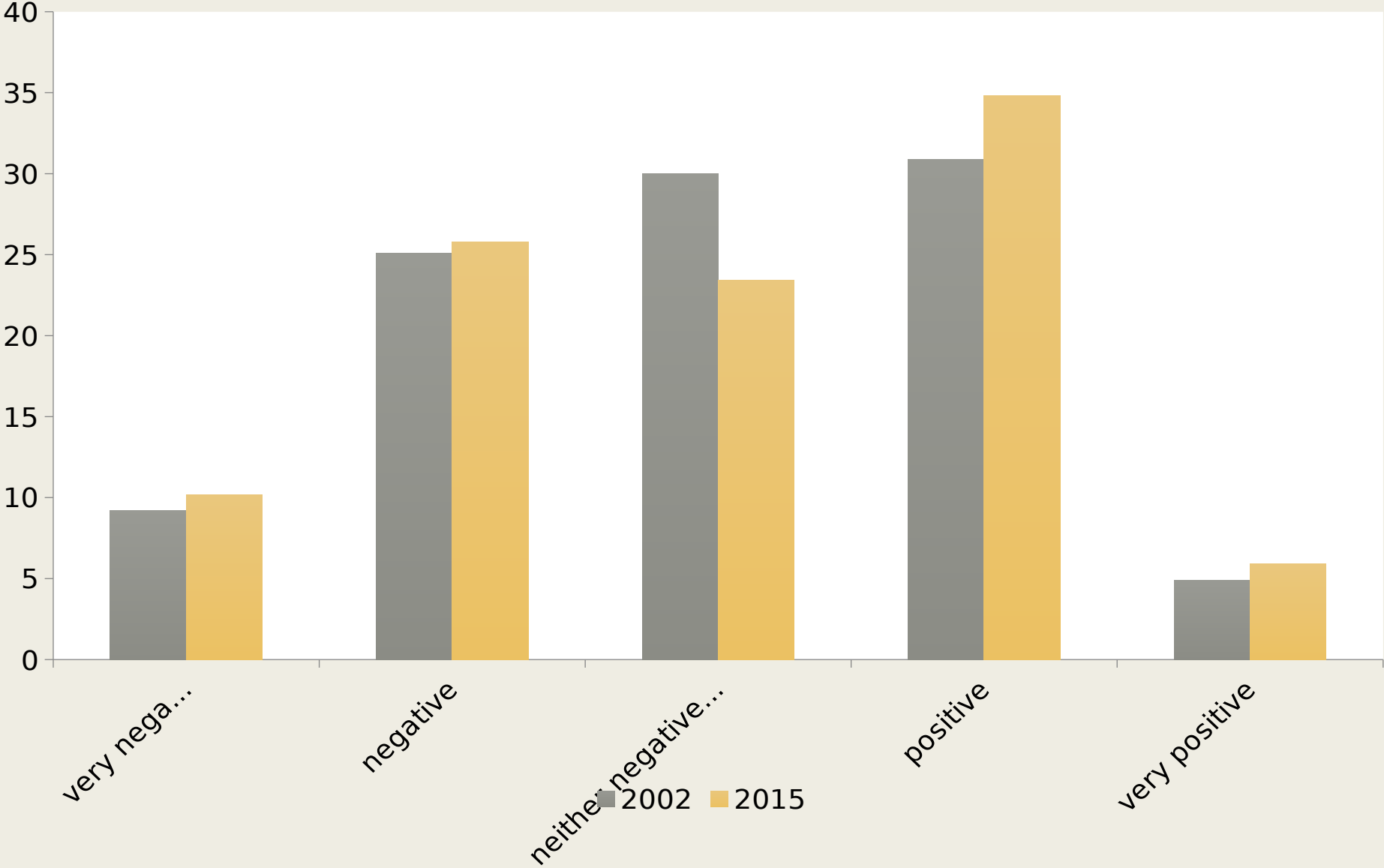
Does immigration from other EU member states / outside the EU conjure up a positive or negative feeling for you? Source: Eurobarometer, 2014-2021



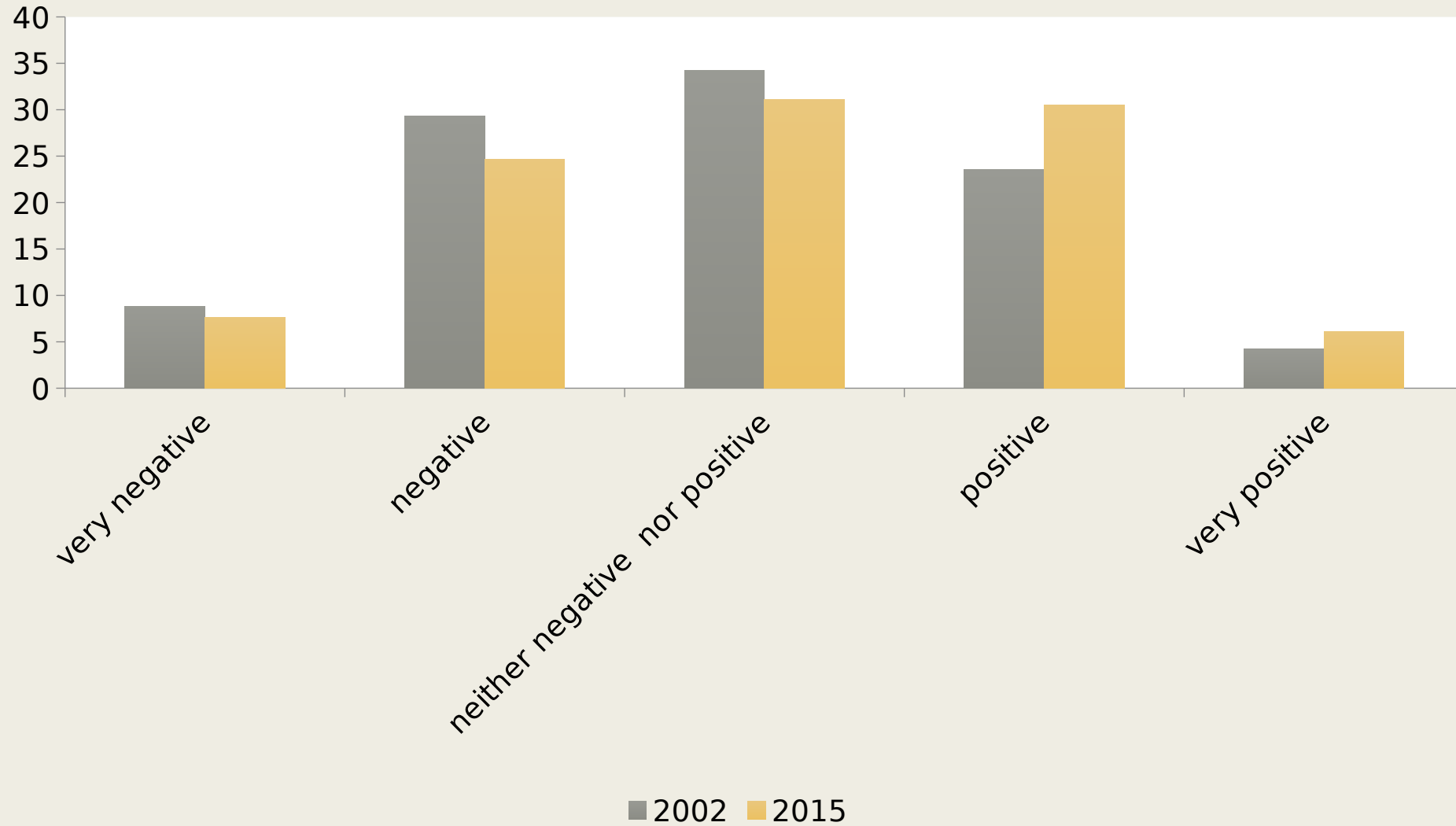
What would you say are the two most important issues affecting your country right now? % saying immigration. Source: Eurobarometer, 2005-2020



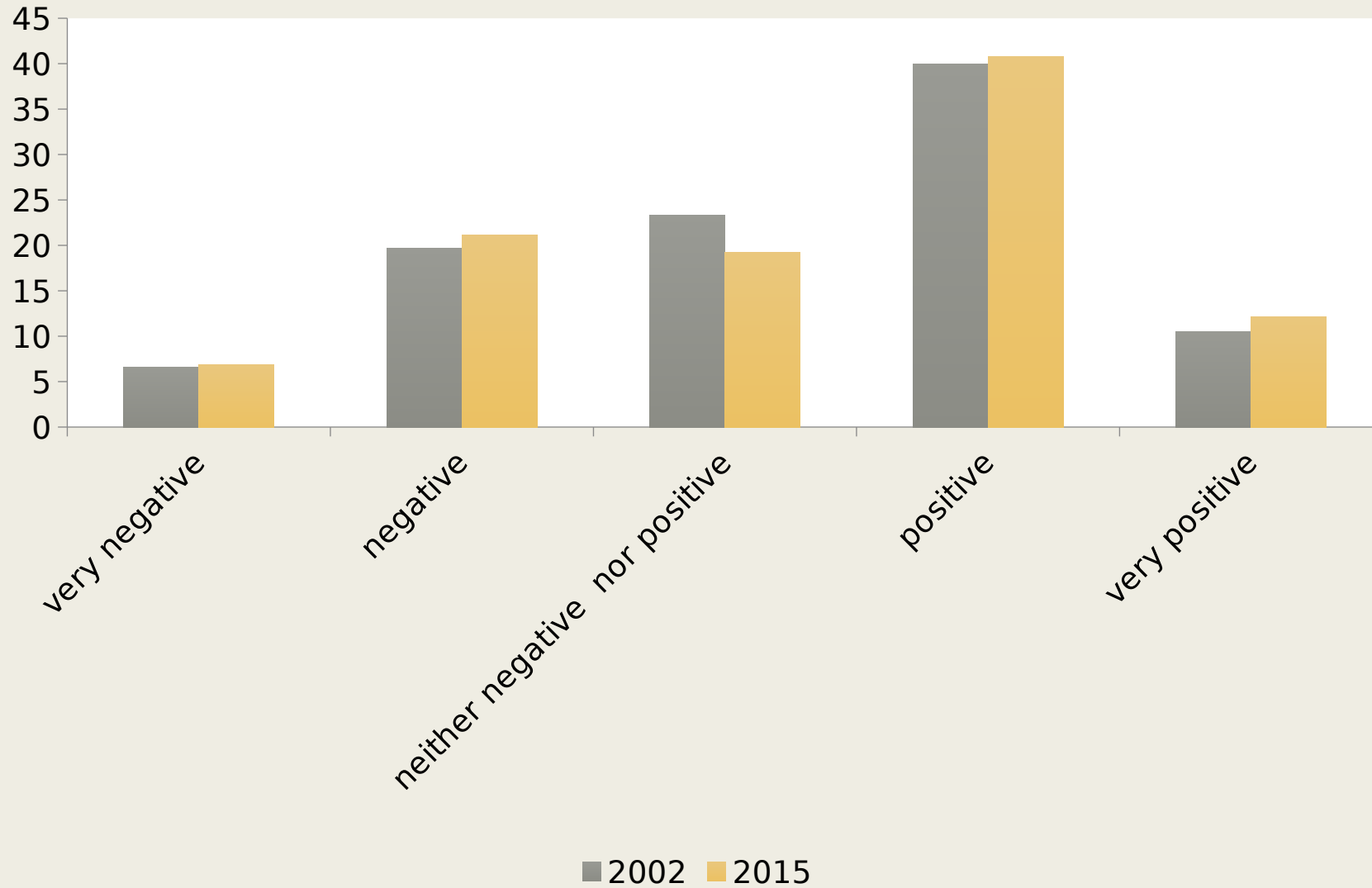
# Perceived effect of immigration on the economy (source: ESS 2015)



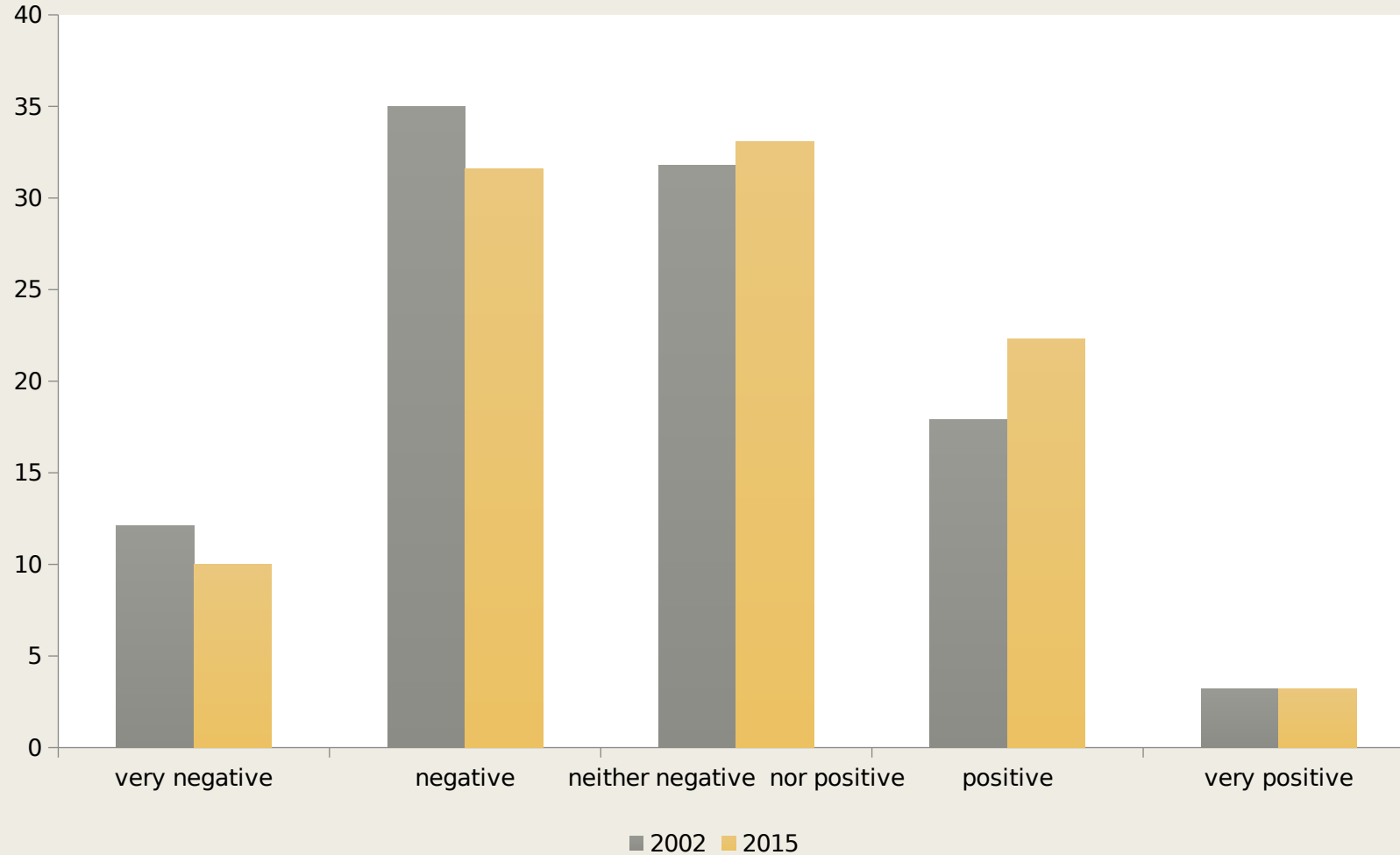
## Perceived effect of immigration on quality of life (source: ESS 2015)



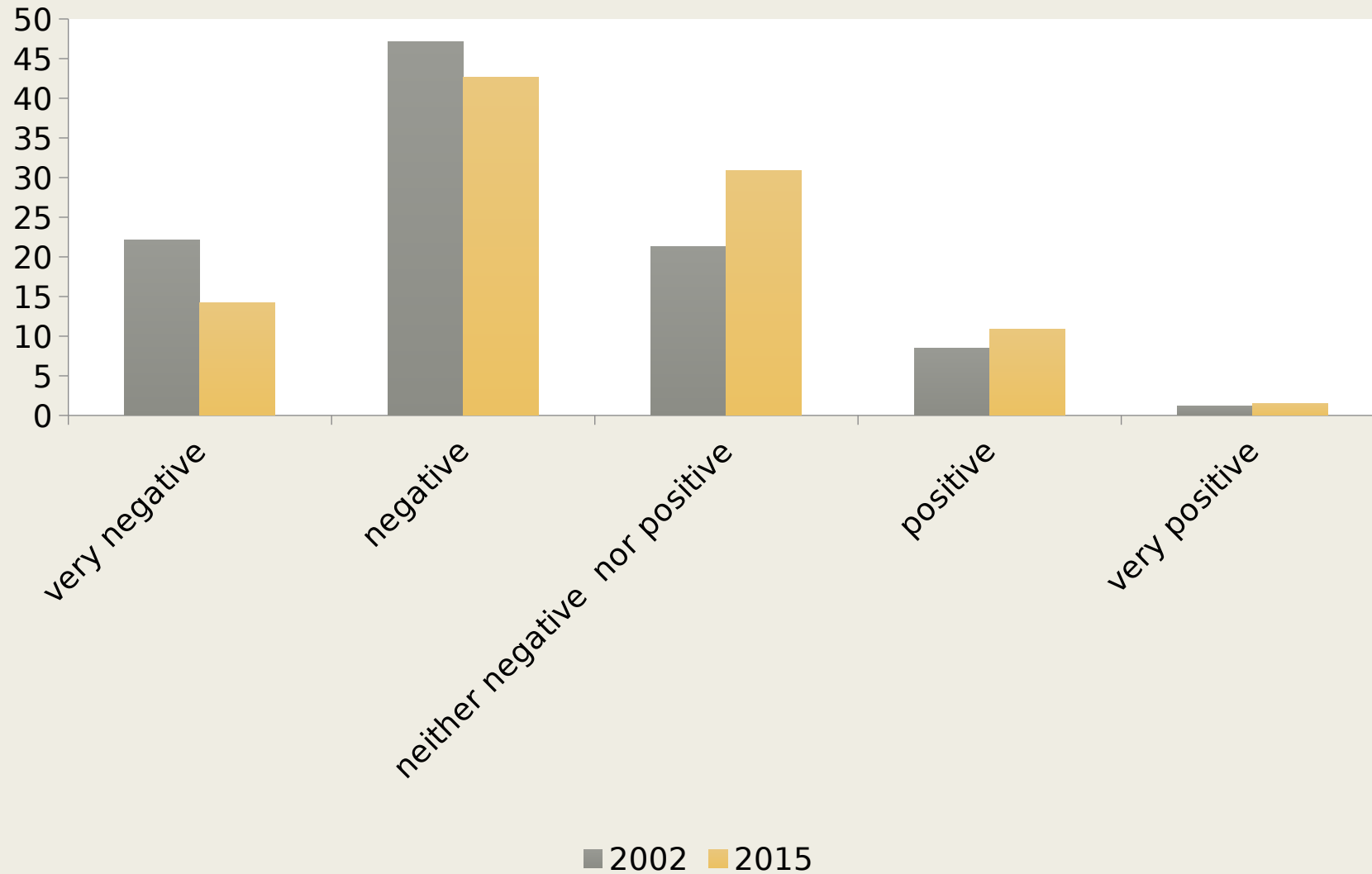
## Perceived effect of immigration on culture (source: ESS 2015)



## Perceived effect of immigration on government accounts (source: ESS 2015)



## Perceived effect of immigration on crime (source: ESS 2015)





# Individual level

- Attitudes are *fairly* stable, though in many places actually improving. Overall, though, there isn't a vast amount of temporal variation (besides salience)
- HOWEVER, individuals vary between each other a lot!
- Why?
- A lot of work has gone into this ...

# Suggested theories for attitudes to immigration are vast!

- At least four *categories* of theories that explain attitudes to immigration:

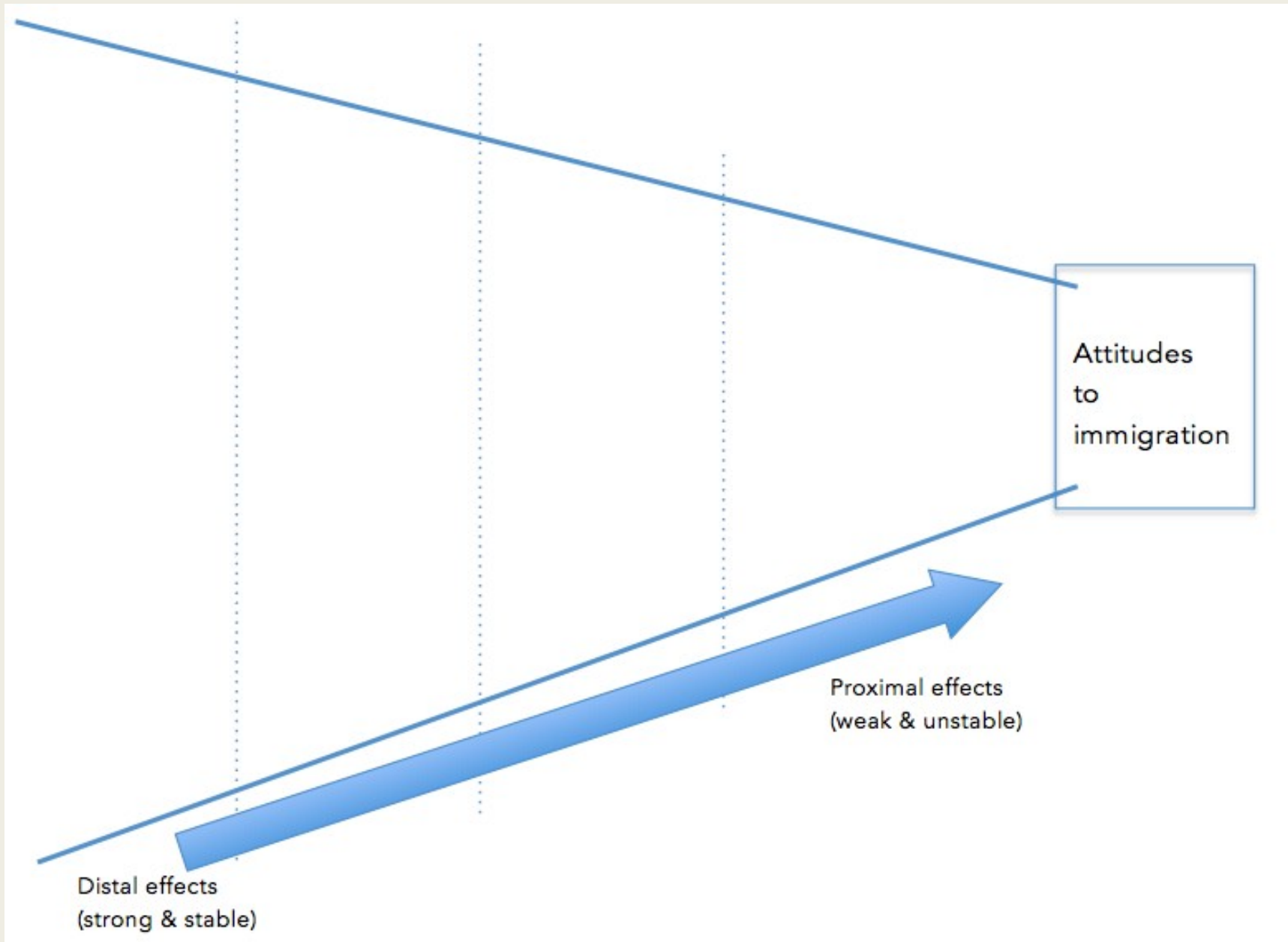
Psychological	Socialisation	Attitudinal	Contextual

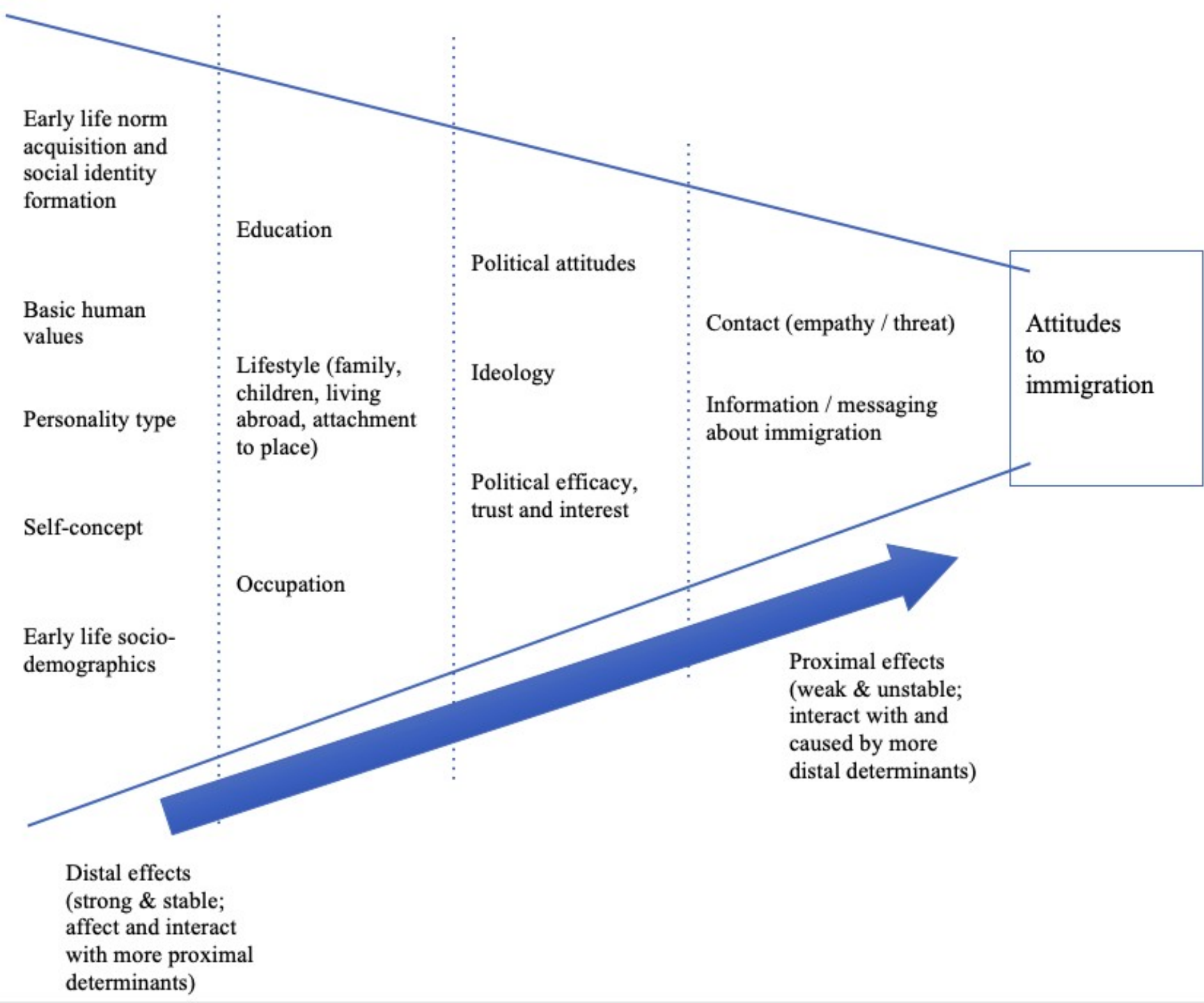
# Suggested theories for attitudes to immigration are vast!

Psychological	Socialisation	Attitudinal	Contextual
Personality types	Parent's views	Left-right positioning	Neighborhood safety
Moral foundation	Schooling	Ideology	Contact with immigrants
Values	Early peer group	Libertarian-authoritarian	
	Lived abroad	Anti-establishment sentiment	Local immigration rates
	Mobility		Perceptions of immigration levels
	Urban/rural		
	Job sector		

# What to do with so many findings?

- There's no reason to necessarily believe that not all of these are right
- Multiple causal mechanisms are related, and often indeed reliant, upon one another.
- All have direct and indirect effect
- Some are distal (*big effects, hard to change*)
- Some are proximal (*small effects, easier to change*)

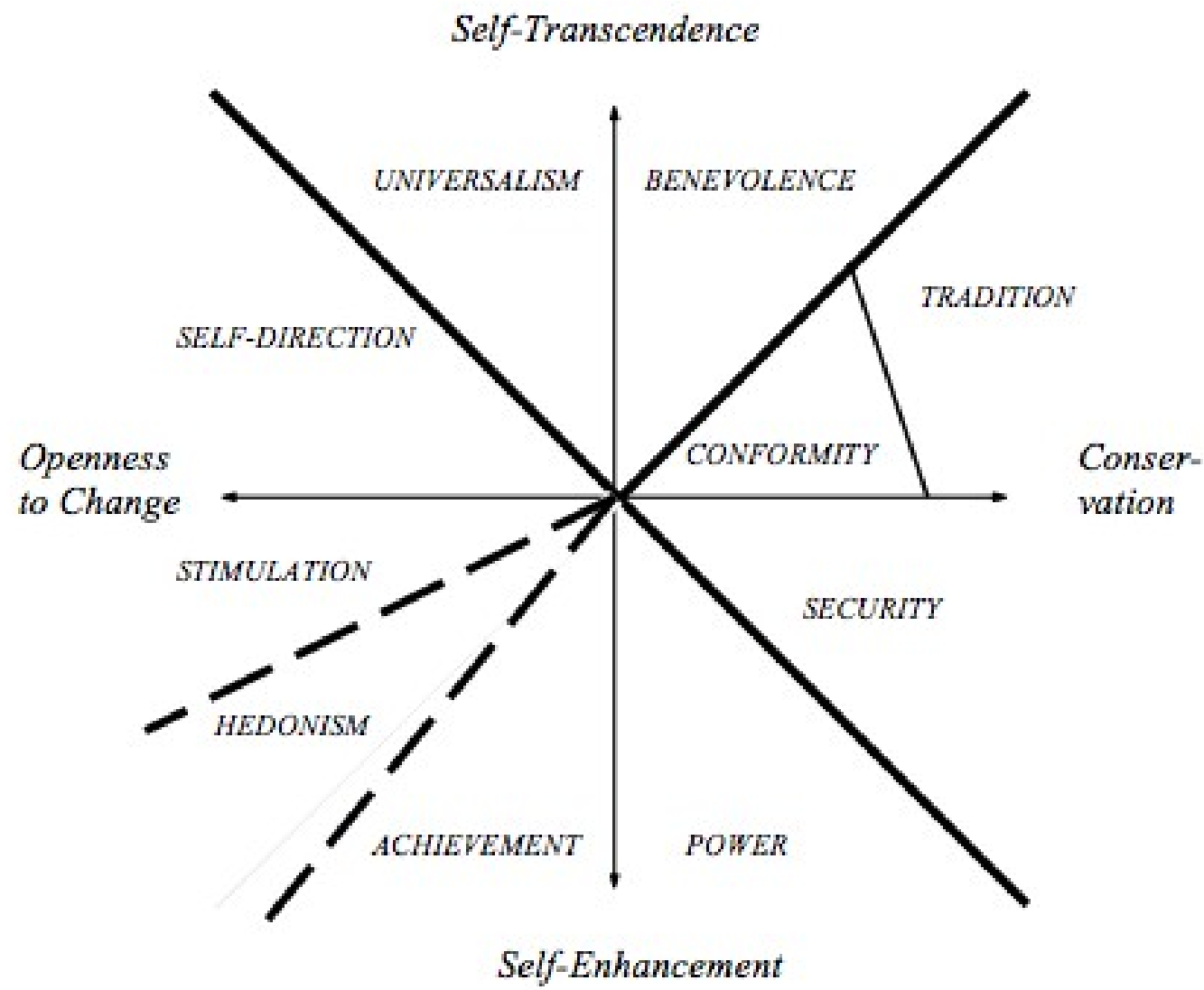




# Let's look at how values affect attitudes

## ■ What are values?

- *Broad motivational goals in life, guiding principles*
- *Many ways to measure them. All ways suggest:*
  - Values are stable, identifiable, drawn from specific set, vary a lot between individuals
  - Can predict attitudes and behaviours well
  - Deeply rooted in individuals





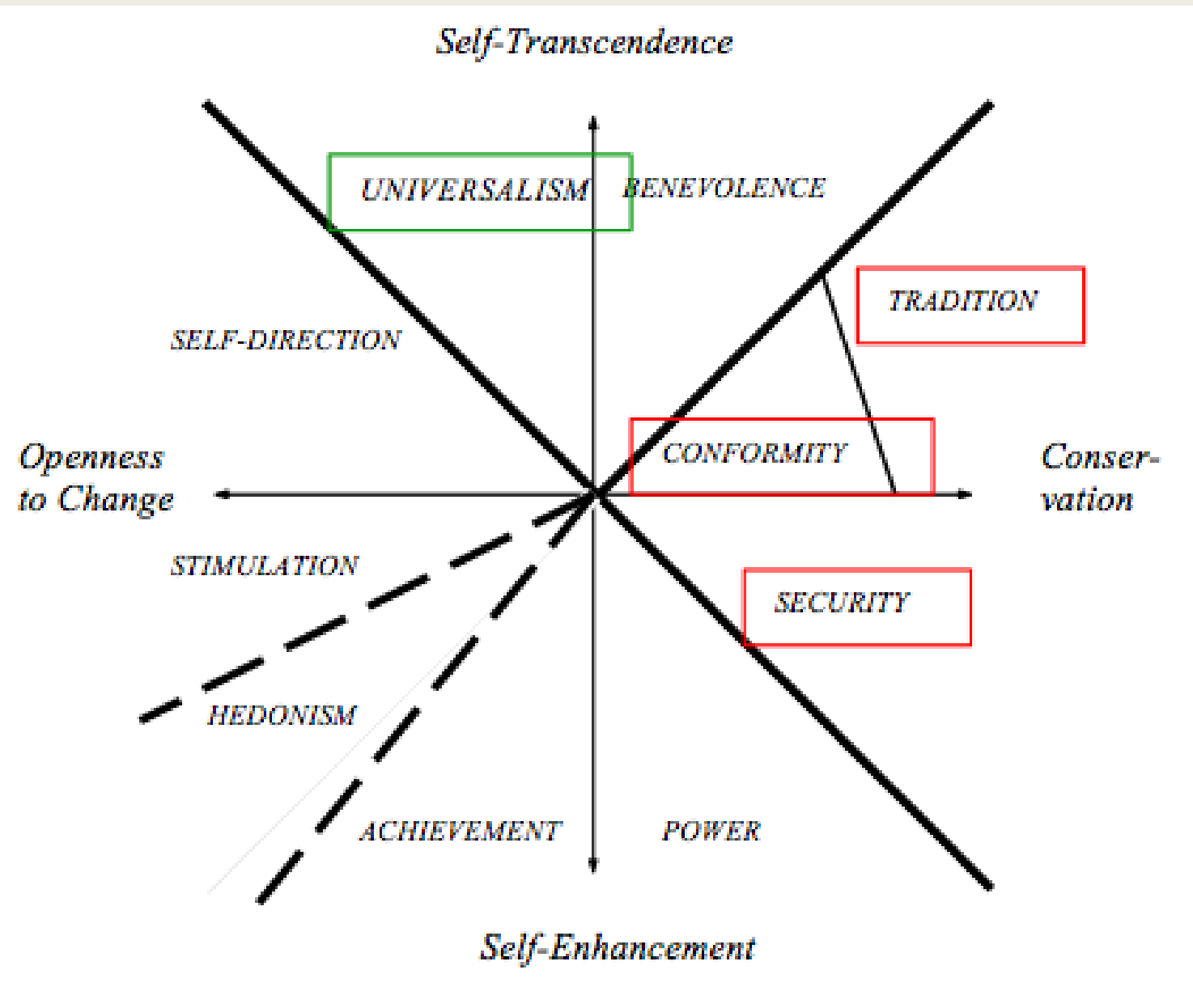


Figure 3. "We are Upper Austria"; "Yesterday refugee, today medic. I am a stranger until you get to know me"





Figure 4. Top right: 'Migration pact = focus on maintaining the culture of origin of migrant'. Bottom left: 'So that

Europe does not become Eurabia!'. Bottom right: 'Migration pact = difficulty in organizing returns'





Figure 5. Top right: 'Sandra has been sleeping in her car with her son for three months. Unfortunately for her he is not a migrant'; Bottom left: 'I live an experience out of the ordinary. I defend my country.' Bottom right: "I want to be the new breath that is going to change our country'

„There is a huge difference between being tolerant and tolerating intolerance.“  
Ayann Hirsi Ali

migrationspakt-stoppen.info

SANDRA DORT DANS SA VOITURE, AVEC SON FILS, DEPUIS TROIS MOIS.

HÉLAS POUR ELLE, SANDRA N'EST PAS MIGRANTE.

AVANT NOTRE PAYS, LES LOIS DE NOS SEigneurs SONT SÉVÈRES EN CE QUI CONCERNE L'IMMIGRATION DÉCONTRÔLÉE.

Je Veux être la Marine

JE VIS UNE EXPÉRIENCE HORS DU COMMUN

JE DÉFENDS MA TERRE

JE VEUX ÊTRE LE NOUVEAU SOUFFLE QUI VA CHANGER NOTRE PAYS

GÉNÉRATION IDENTITAIRE



### Context: a need for a narrative?

- Salience of the issue
- Uncertainty, complexity, risk and novelty



### Narrative: plausible?

- Internally coherent
- Externally verifiable
- Reliability of the communicator



### Recipient: predisposed to agreement?

- Activates imagination
- Maintains consonance
- Affirms self-identity & values
- Aligns with interests
- Relevant personally

